



Cooperative Extension Service
Garrard County
1302 Stanford Road
Lancaster, KY 40444
(859) 792-3026
Fax: (859) 792-3026
extension.ca.uky.edu/garrard

Garrard County Family and Consumer Sciences Newsletter

Hi Everyone!

I hope these late summer days are treating you well. I am currently on maternity leave, but I hope you will still join us for ongoing programs at the Garrard County Extension Office! There is also a great area wide program on Disaster Preparedness which will be held at the Boyle County Extension Office this month on August 28th! See below for more details. It is the first Homemaker Leader Lesson of the year, but it is free and open for anyone to attend! You do not have to be a homemaker to register.

As always, please reach out to our office if you have any questions! See you soon!

County Extension Agent for
Family and Consumer Sciences
kayla.lunsford@uky.edu

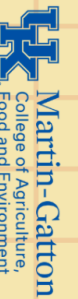


CHECK US OUT ON
SOCIAL MEDIA!



[HTTPS://WWW.
FACEBOOK.COM/
GARRARDCOUNTY
FCS](https://www.facebook.com/garrardcountyfcs)





EASY BIG TOTE BAG

INSTRUCTOR: MARY HIXSON

COST OF CLASS: \$5



Please register via Eventbrite.com by August 4th. Just scan the QR code and follow instructions for checkout! You can also bring cash or check payment to the Extension Office. Call 859-792-3026 if you need assistance with registration.

LOCATED AT THE GARRARD COUNTY EXTENSION OFFICE: 1302 STANFORD RD. LANCASTER, KY 40444

**Cooperative
Extension Service**

Agriculture and Natural Resources
Family and Consumer Sciences
4-H Youth Development
Community and Economic Development

MARTIN-GATTON COLLEGE OF AGRICULTURE, FOOD AND ENVIRONMENT



IF YOU CAN SEW A STRAIGHT SEAM—YOU CAN MAKE A TOTE BAG WITH FABRIC YOU PICK OUT WITH TRIM YOU LIKE. WE WILL USE SIMPLE DIRECTIONS TO MAKE A FAVORITE BAG WITH STRAPS.

SIZE: 13" WIDE X 16" HIGH X 7" DEEP

PICK OUT DECORATOR WEIGHT FABRIC:

¾ YARD FOR TOP OUTSIDE FABRIC

LINING FABRIC: COTTON WOVEN FABRIC:

¾ YARD

FIND COORDINATING FABRIC IN CANVAS OR DUCK CLOTH FOR STRAPS, BOTTOM AND TRIM: ¾ YARD (YOU MAY USE COMMERCIAL STRAPING—8 FEET LONG X 1 1/2" WIDE)

PRE-CUTTING DIRECTIONS WILL BE SENT AFTER SIGN UP.

Disabilities
accommodated
with prior notification.

Save the date

FORT HARROD AREA
2025 HERITAGE CRAFT CAMP
OCTOBER 24TH AND 25TH

Boyle County Extension Office
99 Corporate Dr, Danville, KY 40422

Cooperative
Extension Service

Agriculture and Natural Resources
Family and Consumer Sciences
4-H Youth Development
Community and Economic Development

MARTIN-GATTON COLLEGE OF AGRICULTURE, FOOD AND ENVIRONMENT
Educational programs of Kentucky Cooperative Extension serve all people regardless of economic or social status and/or race. Participants on the basis of race, culture, ethnicity, nation, gender, religion, sexual orientation, and/or limited ability to communicate with others are hereby notified that their rights will be protected.

and will not discriminate on the basis of race, color, ethnic origin, national origin, creed, religion, political belief, sex, sexual orientation, gender identity, gender expression, pregnancy, marital status, genetic information, age, veteran status, physical or mental disability or reported or suspected prior civil rights activity. Reasonable accommodation of disability may be available with prior notice. Program information may be made available in languages other than English. University of Kentucky, Kentucky State University, U.S. Department of Agriculture, and Kentucky Cooperative Extension, Lexington, KY 40506



 Open Cities
accommodated
with voice navigation

Painting Class

SEPTEMBER 11TH
1-3 PM
GARRARD COUNTY EXTENSION OFFICE



COST: \$10

Join instructor Regina Rice for a beginner friendly painting class!

Call the office at 859-792-3026 or
email garrard.extauky.edu to sign up.

Cooperative

Extension Service

Agriculture and Natural Resources
Family and Consumer Sciences
4-H Youth Development
Community and Economic Development

MARTIN-GATTON COLLEGE OF AGRICULTURE, FOOD AND ENVIRONMENT

The Martin-Gatton College of Agriculture, Food and Environment is a leading institution in the field of agriculture, food and environment. The college offers a wide range of programs and services to its students and the community. The college is committed to providing a high quality education and to promoting the advancement of the field of agriculture, food and environment.



Disabilities
with prior notification.

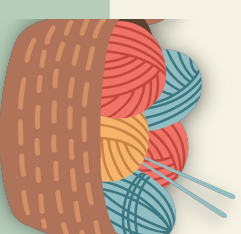
NEW!

KNITTING GROUP

**MEET THE 1ST MONDAY
OF EVERY MONTH AT**

6PM!

**JOIN ANYTIME IF YOU
LIKE KNITTING!**



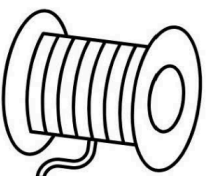
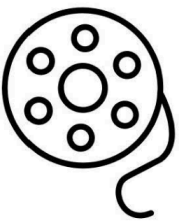


It's Sew Fine Sewing Seminar

September 4th and 5th 2025

Join us for classes on:

- Garment Construction
- Quilting
- Bags
- Home decor
- Accessories



Held at Boyle County Extension Office
99 Corporate Drive, Danville, KY

**Cooperative
Extension Service**

**Cooperative
Extension Service**
Agriculture and Natural Resources
Family and Consumer Sciences
4-H Youth Development

MARTIN-GATTON COLLEGE OF AGRICULTURE, FOOD AND ENVIRONMENT

Substantial programs of Kentucky Cooperative Extension serve all people regardless of economic or social status and will not discriminate on the basis of race, color, ethnic origin, national origin, creed, religion, political belief, sex, physical or mental disability or marital status. Program information may be made available in languages other than English. University of Kentucky, Kentucky State University, U.S. Department of Agriculture, and Kentucky Counties, Cooperating.



Disabilities
with prior notification.

FOR A HARD COPY OF THE CLASS LIST
AND REGISTRATION PACKET, STOP BY
THE GARRARD COUNTY EXTENSION
OFFICE.



**Cooperative
Extension Service**
Family and Consumer Sciences



FORT HARROD
MULTICOUNTY
LEADER LESSON

NAVIGATING TRAUMA AFTER A NATURAL DISASTER

Kentucky has gone through a number of events recently that has affected many individuals and families. Join us as we learn how to navigate through trauma after natural disaster.

Register by calling (859) 236-4484

Boyle County Extension Office
99 Corporate Dr, Danville, KY
40422

August
28
@ 10am



**Cooperative
Extension Service**

Agriculture and Natural Resources
Family and Consumer Sciences
4-H Youth Development
Community and Economic Development

MARTIN-GATTON COLLEGE OF AGRICULTURE, FOOD AND ENVIRONMENT

Substantial programs of Kentucky Cooperative Extension serve all people regardless of economic or social status and will not discriminate on the basis of race, color, ethnic origin, national origin, creed, religion, political belief, sex, physical or mental disability or marital status. Program information may be made available in languages other than English. University of Kentucky, Kentucky State University, U.S. Department of Agriculture, and Kentucky Counties, Cooperating.



Disabilities
with prior notification.

Homemaker Happenings



HOSTED BY THE GARRARD COUNTY HOMEMAKERS

SAVE THE DATE

*Fort Harrod Area
Homemakers Annual Meeting*

OCTOBER 10TH AT 10AM
AT LANCASTER BAPTIST CHURCH



**THE TIES
THAT BIND:
THE HISTORY OF
APRONS AND
HOMEMAKING IN
APPALACHIA**

**REGISTRATION DETAILS
COMING SOON.**

Cooperative
Extension Service

Agriculture and Natural Resources
Family and Consumer Sciences
4-H Youth Development
Community and Economic Development

MARTIN-GATTON COLLEGE OF AGRICULTURE, FOOD AND ENVIRONMENT

Educational programs of Kentucky Cooperative Extension serve all people regardless of economic or social status and will not discriminate on the basis of race, color, ethnic origin, national origin, creed, religion, political belief, sex, sexual orientation, gender identity, gender expression, pregnancy, marital status, genetic information, age, veteran status, physical or mental disability or reprisal or retaliation for prior civil rights activity. Reasonable accommodation of disability may be available with prior notice. Program information may be available in languages other than English.

University of Kentucky, Kentucky State University, U.S. Department of Agriculture, and Kentucky Counties, Cooperating



Upcoming dates to
remember

**Not Your Mama's
Homemaker Club:
August 1st at 6pm,
Extension Office**

**Go-Getter's Club:
August 18th at
6pm, Extension
Office**

**Homemaker
Council Meeting:
August 26th at 6pm**

**Area Annual
Meeting: October
10th at 10am**

Volunteer Service Unit (VSU) Log (copy as needed)

Name: _____

Address: _____

County: _____

Phone: _____

Email: _____

[illegible]

Categories: Extension = Volunteer service for projects or programs directed by an Extension Agent. KEHA = Volunteer hours for projects initiated and led by KEHA members. Community = Service to other entities/organizations in the community (not Extension or KEHA projects). Personal = Unpaid service to family, friends, and neighbors. See KEHA Handbook pages 89-90 for complete category descriptions. Report all hours earned within the past KEHA year (July 1 – June 30). Logs are due to the county Leadership Chairman or designated contact by July 1.

Appendix 18

August 2025

SUNDAY	MONDAY	TUESDAY	WEDNESDAY	THURSDAY	FRIDAY	SATURDAY
					1	2
3	4 Knitting Group 6pm	5 Lunch & Learn 12pm and 6pm	6	7 Tote Bag Class 5:30pm	8	9
10	11	12	13	14	15	16
17	18 Go-Getters Club 6pm	19	20	21 Garden Club 4pm	22	23
24	25 Friendly Fibers 1:30pm	26 Homemaker Council 6pm	27	28	29	30
31						